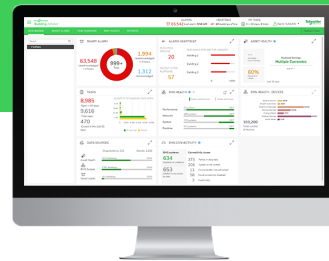


Building Advisor Portal

EcoStruxure Building Advisor

EcoStruxure™ Building



Introduction

EcoStruxure Building Advisor simplifies maintenance, improves comfort, optimizes performance, and extends the life of the assets in a building. It is a suite of cloud-based monitoring and analytics software leveraged by experts from Schneider Electric and EcoXpert partners.

Building Advisor helps to monitor your entire building portfolio and make proactive, data-driven decisions for the maintenance and operation of your buildings.

Features

Portal administration

Building Advisor Portal consolidates views of all the clients, their buildings and deployed system and services. The portal offers an aggregated view of Building Advisor's suite of modules enabling digital services. The portal supports multilingual and administrative functions to enable flexible access across teams or end users.

Asset Health

The Asset Health module monitors building equipment operation, analyzes performance, and provides automated fault detection with diagnostics. You can easily see your building equipment

Building Advisor Portal

issues, opportunities to improve with associated costs, and severity impacts.

BMS Health

The BMS Health module provides automation in continuous check of BMS servers, controllers, and devices, which saves time and improves coverage as well as accuracy compared to manual checks. The module also helps identify hardware that needs to be replaced due to end of life or software that needs to be upgraded.

Alarm Health

The Alarm Health module provides alarm insights to drive continuous improvement creating functional alarms. Use analysis and reports for alarm events to provide context for where to focus attention, and to reduce risk of missing critical alarms that require attention but are masked by high volumes of alarms.

Task Manager

The Task Manager module provides a view to track maintenance tasks related to Asset Health, BMS Health, and Alarm Health. For Asset Health tasks, you can view return on investment (ROI), key performance indicators (KPIs), completed tasks, technician notes, avoidable costs, and realized savings for assets and equipment. For BMS Health tasks, you can create and manage actionable tasks based on the issues identified by the preventive maintenance checks on the BMS system. For Alarm Health, you can create and manage actionable tasks to address the volume of nuisance alarm and implement a more efficient alarm management strategy.

Specifications

| | |
|---|---|
| Building Advisor Portal | |
| Recommended web browsers | Google Chrome Microsoft Edge Mozilla Firefox Safari |
| Keep your web browser up-to-date for full feature support and improved security | |
| Display | Recommended: 1024x768 pixel resolution Landscape or portrait orientation |
| Data sources | |
| Asset Health (DTS Service) | Protocol: HTTPS Port: 443 |
| BMS Health (CloudPlugin) | Protocol: HTTPS (TLS 1.2 required) Port: 443 |
| Alarm Health | Protocol: HTTPS (TLS 1.2 required) Port: 443 |
| Cybersecurity | |
| Application | IEC 62443-4-1 compliant |
| Data centers | SOC 2 certified |

Building Advisor Portal

| | |
|---|---|
| Asset Health | |
| Supported platforms | ALC, Alerton, Carrier, Delta, Eaton, Honeywell EBI, JCI, OSIsoft, Schneider Electric, Siemens, Apogee, Siemens Desigo, Trane, Tridium, and more |
| Supported Protocols | BACnet, Modbus, OPC, EWS, OPC, TACOS, oBIX, and R2 |
| BMS Health | |
| Compatible Building Management System | EcoStruxure Building Operation version 3.0.4 and later |
| The EcoStruxure BMS must be registered and have Internet connectivity. The top server in the EcoStruxure BMS must support cloud connectivity. | |
| Enterprise Server and Enterprise Central | EcoStruxure Building Operation version 3.0.4 and later |
| SmartX AS-P and AS-B servers | EcoStruxure Building Operation version 3.0.4 and later |
| For more information on specifications and port usage, see IT System Planning Guide - EcoStruxure Building Management. | |
| Alarm Health | |
| Compatible Building Management System | EcoStruxure Building Operation version 3.0.4 and later |
| The EcoStruxure BMS must be registered and have Internet connectivity. The top server in the EcoStruxure BMS must support cloud connectivity. | |
| Enterprise Server and Enterprise Central | EcoStruxure Building Operation version 3.0.4 and later |
| SmartX AS-P and AS-B servers | EcoStruxure Building Operation version 3.0.4 and later |
| For more information on specifications and port usage, see IT System Planning Guide - EcoStruxure Building Management. | |

www.se.com/buildings

